



### KNEEROVERALL TERRAIN KNEE WALKER

DESCRIPTION  
TESTIMONIALS  
PRODUCT INQUIRY

SPECIFICATIONS  
USER MANUAL



- Adjustable Rim Hand Brake
- Dual Crossbar Design for Extreme Durability
- Features Rear Brake for Smoother, More Consistent Braking

#### Braking

- Padded Contoured Comfortable Knee Platform with Easy Folding Mechanism

- 7.5" x 12.5" x 8.25" Wire Basket is included for Leg Compatibility
  - Left and Right
- Knee Rest: 3" Contoured Molded Foam
- Handlebars: Comfort Form 7/8" Steel
- Grips: Easy Clean Rubber
- Setup: Tool Free
- Accommodates patient heights 5' - 6'5"

[BUY NOW!](#)



convenient storage and transport of your personal belongings

### PRODUCT DESCRIPTION

Powerful, Durable and Agile, The All Terrain KneeRover Knee Walker is the new industry standard for safe, effective, and economical outdoor mobility for individuals who cannot bear weight on their foot or ankle, yet want to remain active and mobile. Ideal for indoor and outdoor use, the All Terrain KneeRover Knee Walker features three 12" diameter air-filled tires and a 3" padded knee platform that is left or right-leg compatible. You can now ride through grass, gravel and most terrain that normal small wheel knee walkers just can't handle! No more boundaries!

Additionally, the All Terrain KneeRover Knee Walker features tool-free setup and adjustment, along with a hand rim brake. The KneeRover Knee Walker is equipped with an easy folding mechanism that collapses via a thumb-release lever. You will also receive a FREE basket for storage of your personal belongings.

[CLICK HERE TO WATCH OUR VIDEO](#)

[Print](#)

Ready to purchase your KneeRover?

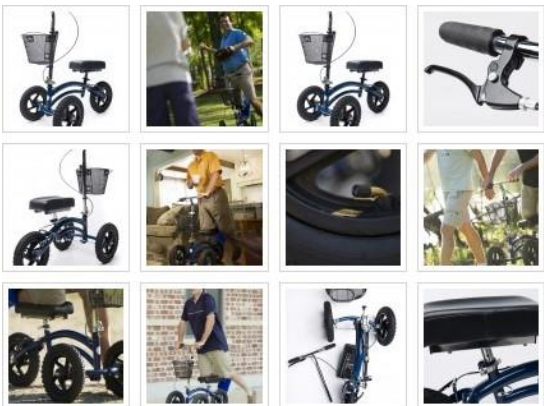
[BUY NOW!](#)

Interested in purchasing one of our KneeRover products? Please visit our exclusive online partner:

[Knee Walker Shop.com](#)  
free to move

Testimonials [<](#) [>](#)

I like this scooter. The seat is comfortable and it folds to be put in the car. I have bad knee arthritis and I'm waiting for surgery. In the meantime, I can still be active - walk my dog, go[...]



- Kristin in Ohio

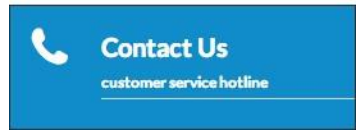
Still Have Questions?

A blue rectangular button with a white question mark icon on the left. To the right of the icon, the text "FAQ" is displayed in a bold, white, sans-serif font. Below "FAQ", the text "find answers fast" is written in a smaller, white, sans-serif font. A thin white horizontal line is positioned at the bottom of the button.

**FAQ**  
find answers fast

A blue rectangular button with a white speech bubble icon on the left. To the right of the icon, the text "Happy Customers" is displayed in a bold, white, sans-serif font. Below "Happy Customers", the text "read customer testimonials" is written in a smaller, white, sans-serif font. A thin white horizontal line is positioned at the bottom of the button.

**Happy Customers**  
read customer testimonials

A blue rectangular button with a white telephone handset icon on the left. To the right of the icon, the text "Contact Us" is displayed in a bold, white, sans-serif font. Below "Contact Us", the text "customer service hotline" is written in a smaller, white, sans-serif font. A thin white horizontal line is positioned at the bottom of the button.

**Contact Us**  
customer service hotline

DESCRIPTION

SPECIFICATIONS

TESTIMONIALS

USER MANUAL

PRODUCT INQUIRY

## FEATURES & SPECS

## ALL TERRAIN KNEEROVER

---

## GENERAL

Weight(lbs)

WeightCapacity (lbs)

Recommended User Height Range 5'6" to 6'8"

Terrain use ALLTERRAIN

Steerable YES

Folds for Easy Transport YES

Color Blue

## DIMENSIONS

Overall Length (inches) 35.5

Width (inches)

FrontAxle Width (inches)

Folded Height(inches)

## KNEE PLATFORM (DISTANCE FROM GROUND TO TOP OF KNEE PAD)

Lowest Position (inches)

Highest Position (inches) 22.5

## KNEE PAD

Width (inches)

Length (inches)

Thickness (inches)

## HANDLE BARS

Min Height(inches)

Max Height(inches)

Grips Ergo Dynamic Easy Clean Rubber

<b>WHEELS</b>	
Diameter (inches)	
Number	3
Type	Air Filled BicycleTires
<b>BRAKE</b>	
Type	Rear Bicycle Brake
Parking Brake	YES
<b>BASKET (INCLUDED)</b>	
Dimensions (inches)	125x8x8
Detachable	YES
<b>ASSEMBLY</b>	
Tool Free Setup	YES

#### ABOUT KNEEROVER

We are committed to providing innovative and affordable mobility solutions to get you moving as soon as possible after injury or surgery and for the duration of your recovery - free to go about your busy, active life - and have a little fun doing it. We are all about leaving the painful crutches behind and giving you the Freedom to Move.

#### CHOOSE YOUR KNEEROVER

Not sure which KneeRover product is right for you? We can help;

[FIND OUT MORE](#)

#### BUY NOW!

Interested in purchasing one of our KneeRover products? Please visit our exclusive online partner:

**Knee Walker Shop.com**

free to move

#### CUSTOMERSERVICE

Copyright Knee Rover 2014

Our exclusive online partner KneeWalkerShop.com offers a convenient toll free Customer Service Hotline, open Monday -Friday 9 am to 5 pm EST.

Website juiced by M3 Agency.

**1-877-737-9877**

Interested in more information, click here to fill out our form:

[CONTACT US](#)