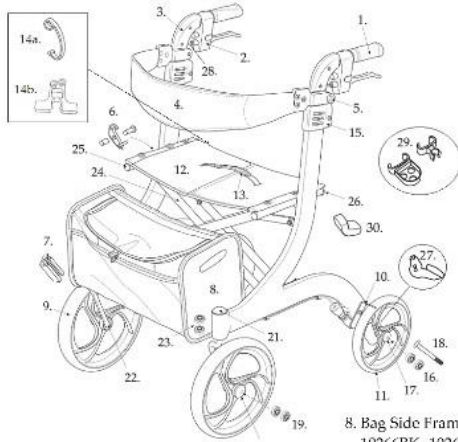


Drive Medical Nitro Euro Rollator Walkers Parts Diagram and Parts List



- 1. Handgrip Left- 1026602
Right- 1026603
- 2. Handbrake
Side Mount (s/n 2A1301 & newer)
10266 Left- 1026601-RN
Right- 1026601-RNR
10266BK Left- 1026601-G
Right- 1026601-GR
10266WT Left- 1026601-W
Right- 1026601-WR
Cable Only 48"- 1026632
- 3. Handle Bar
Side Mount (s/n 2A1301 & newer)- 1026630N
- 4. Backrest Assembly
10266 & 10266WT- 1026604-B
10266BK- 1026604-G
- 5. Backrest Knob & Bolt
10266- 1026605-R
10266WT- 1026605-W
10266BK- 1026605-G
- 6. Safety Lock- 1026638
- 7. Side Frame Bag Mount & Screws (pr)- 1026611

- 8. Bag Side Frame Mount
10266BK- 1026610-G
10266- 1026610-R
10266WT- 1026610-W
Bag Cross Frame Mount (s/n 2A1406 & newer)
10266- 1026633-R
10266BK- 1026633-BK
10266WT- 1026633WT
 - 9. Front Wheel & Fork Assembly
Old Style Fork Left- 1026625
Right- 1026624
New Style Fork Left- 1026625-AN ***
Right- 1026624-AN ***
Front Wheel- 1026617
 - 10. Wheel Lock Assembly Metal Left- 1026615
Right- 1026616
Plastic Left- 1026641 **
Right- 1026642 **
 - 11. Rear Wheel Assembly Left- 1026612-L
Right- 1026612-R
- * Serial # 2A1606300234 & higher.
** Serial # 2A1510302380 & higher.
*** Serial # 2A1606301542 & newer.

- 12. Seat Upholstery & Hardware
Black- 1026608
Grey- 1026608-G
- 13. Strap 10266- 1026609-FSR
10266BK- 1026609-FSG
10266WT- 1026609-FSW
- 14a. Folding Locking Latch 10266- 1026626-R
10266BK- 1026626-G
10266WT- 1026626-W
- 14b. Folding Locking Latch- 1026644 *
- 15. Back Height Adjustment Latch 10266- 1026607-R
10266BK- 1026607-G
10266WT- 1026606-W
- 16. Rear Axle Bearings (pr)- 1026613
- 17. Rear Hub Cap- 1026619
- 18. Rear Axle- 1026631
- 19. Front Axle Bearings (pr)- 1026618
- 20. Front Hub Cap
Old Style Fork- 1026614
New Style Fork- 1026614- AN ***
- 21. Dust Cap (pr)- 1026620
- 22. Fork Assembly
Old Style Fork Left- 1026622
Right- 1026621
New Style Fork Left- 1026622-AN ***
Right- 1026621-AN ***
- 23. Fork Stem Bearings (pr)- 1026623
- 24. Cross Frame
Side Frame Mount Bag- 1026627
Cross Frame Mount Bag- 1026635
(s/n 2A1406 & newer)
- 25. Cross Frame Front End Cap
Side Mount Bag (pr)- 1026628
Cross Frame Mount Bag (ea)- 1026634
(s/n 2A1406 & newer)
- 26. Cross Frame End Caps (pr)- 1026629
- 27. Step Tube Left- 1026636
Right- 1026637
After Serial # 2A140801025....
- 28. Brake Cable Guide- 1026639
- 29. Cane Holder- 892
- 30. Seat Rail Pad- STDS2A1807

10/03/16